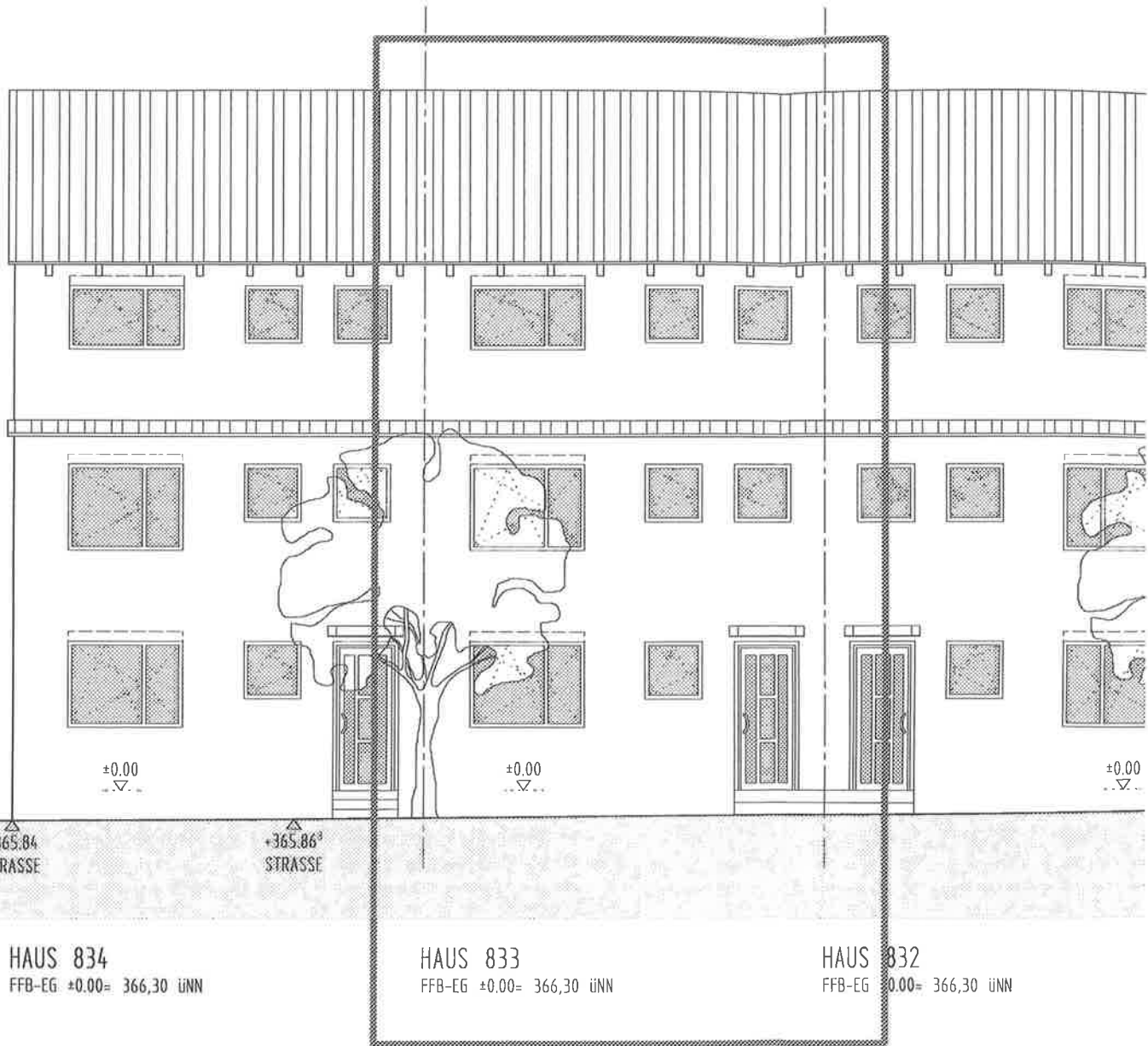


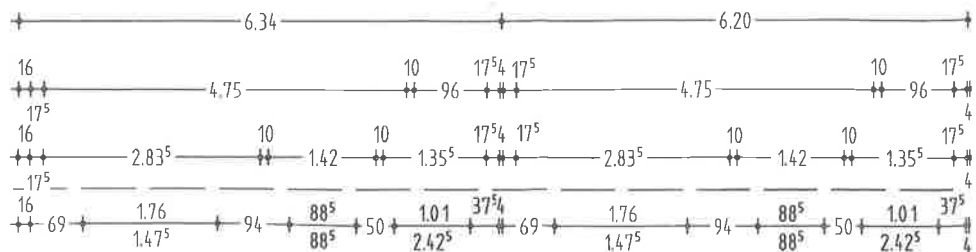
EINGANGSANSICHT



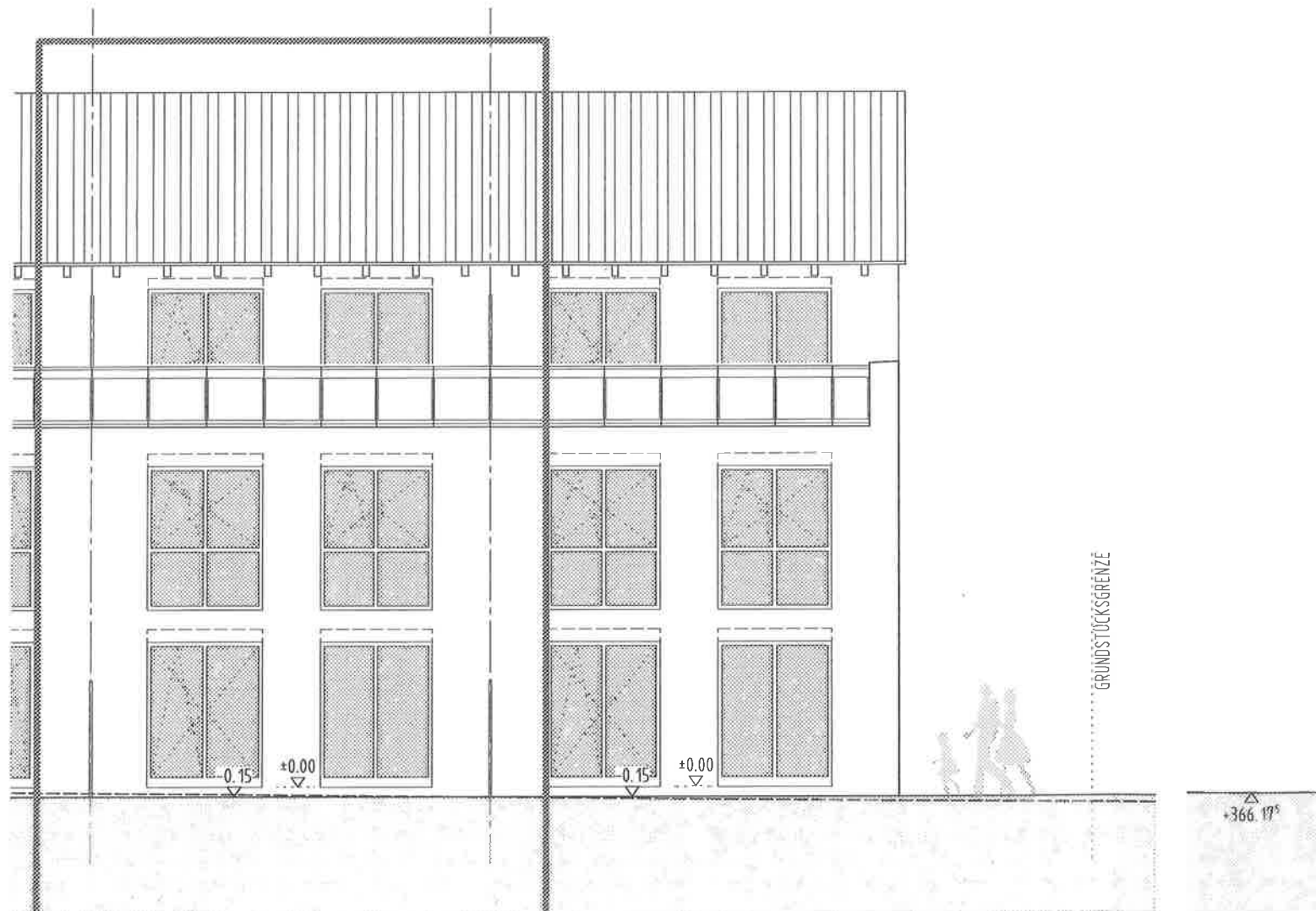
HAUS 834
FFB-EG $\pm 0.00 = 366,30$ ÜNN

HAUS 833
FFB-EG $\pm 0.00 = 366,30$ ÜNN

HAUS 832
FFB-EG $\pm 0.00 = 366,30$ ÜNN



ÖFFENTLICHE PFLANZFLÄCHE
IN BAUMSCHEIBE



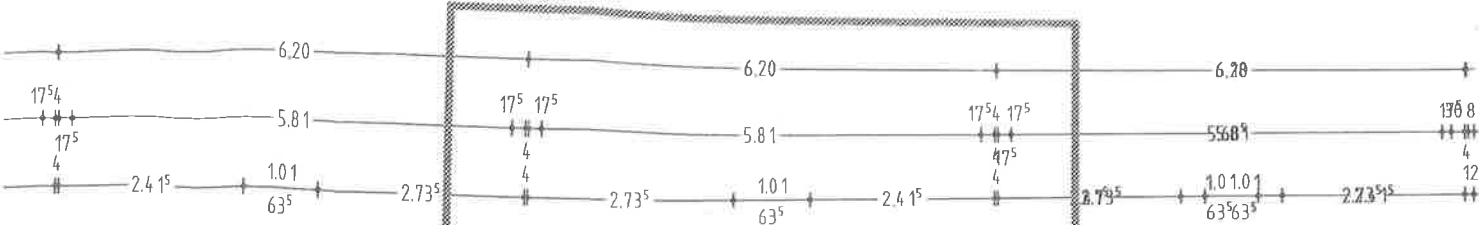
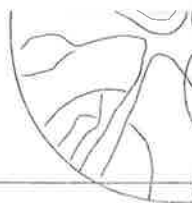
HAUS 833

FFB-EG ±0.00= 366,30 üNN
 OK TERRASSE= -0,15= 366,15 üNN

HAUS 834

FFB-EG ±0.00= 366,30 üNN
 OK TERRASSE= -0,15= 366,15 üNN

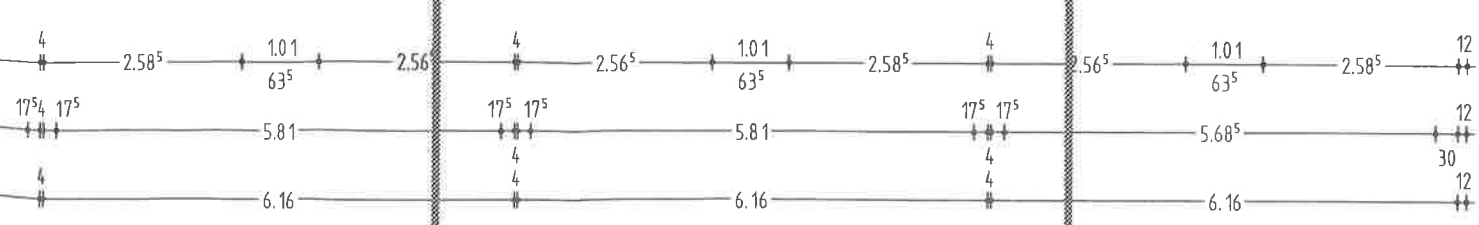
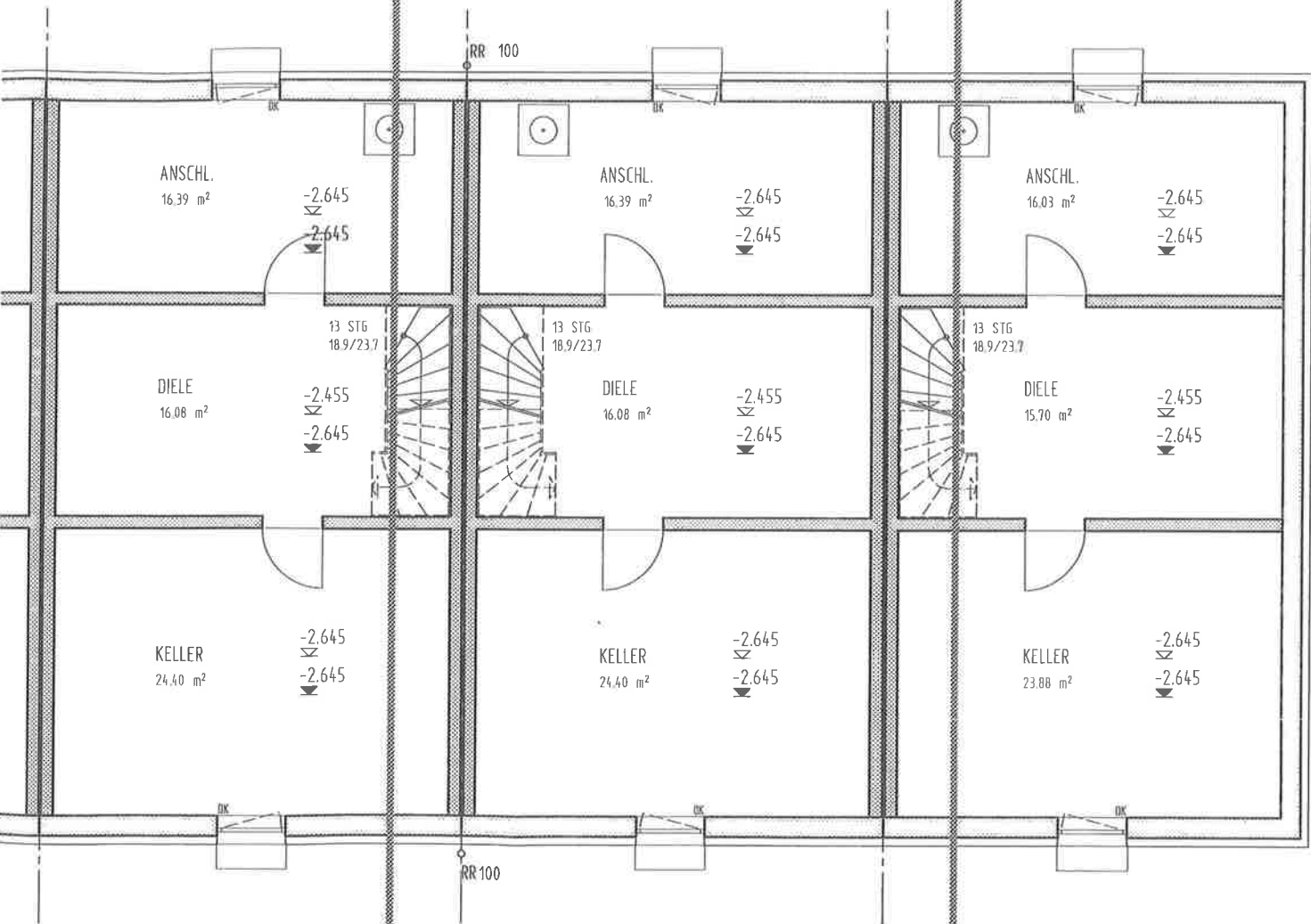
+366.17^s

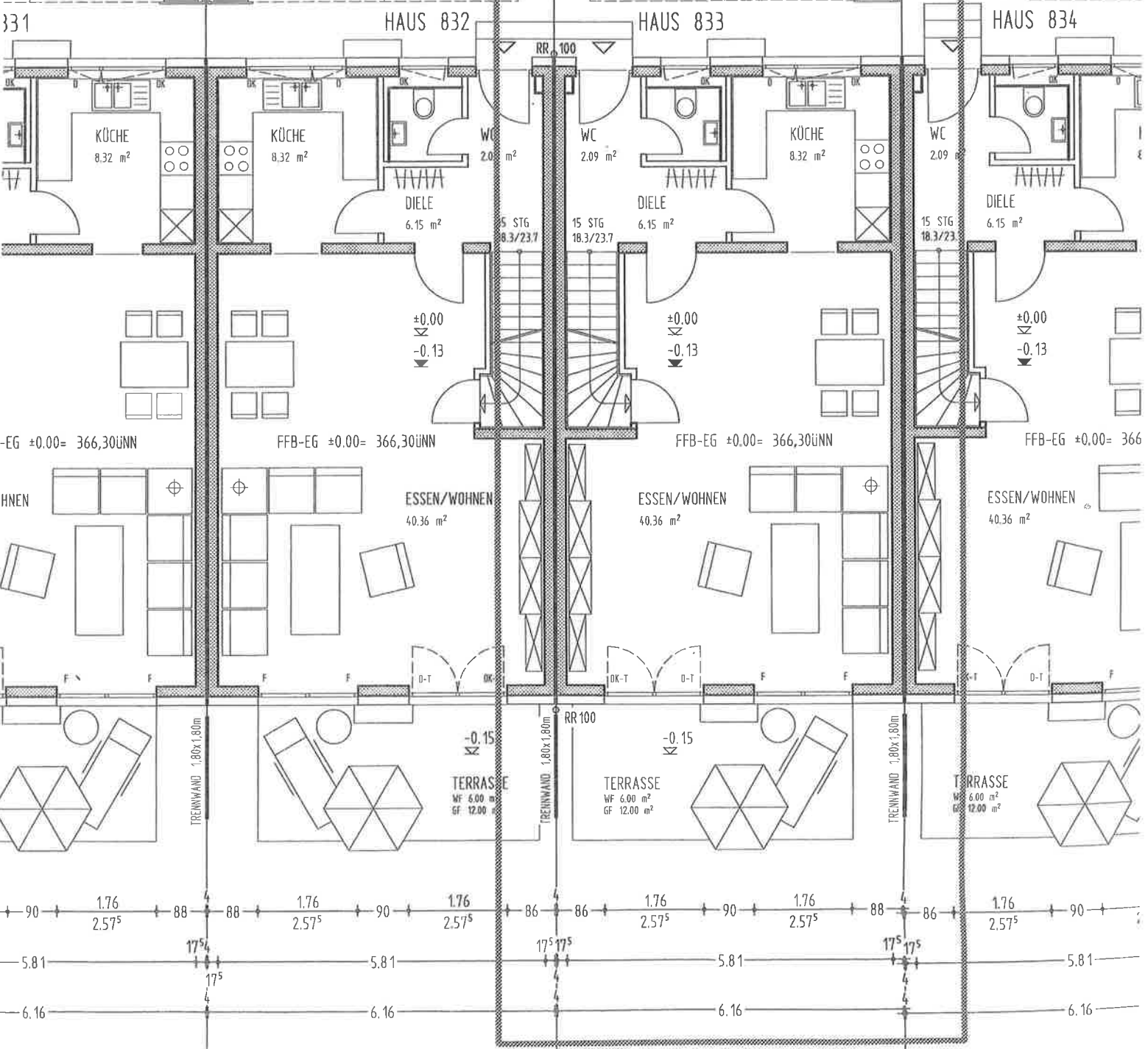
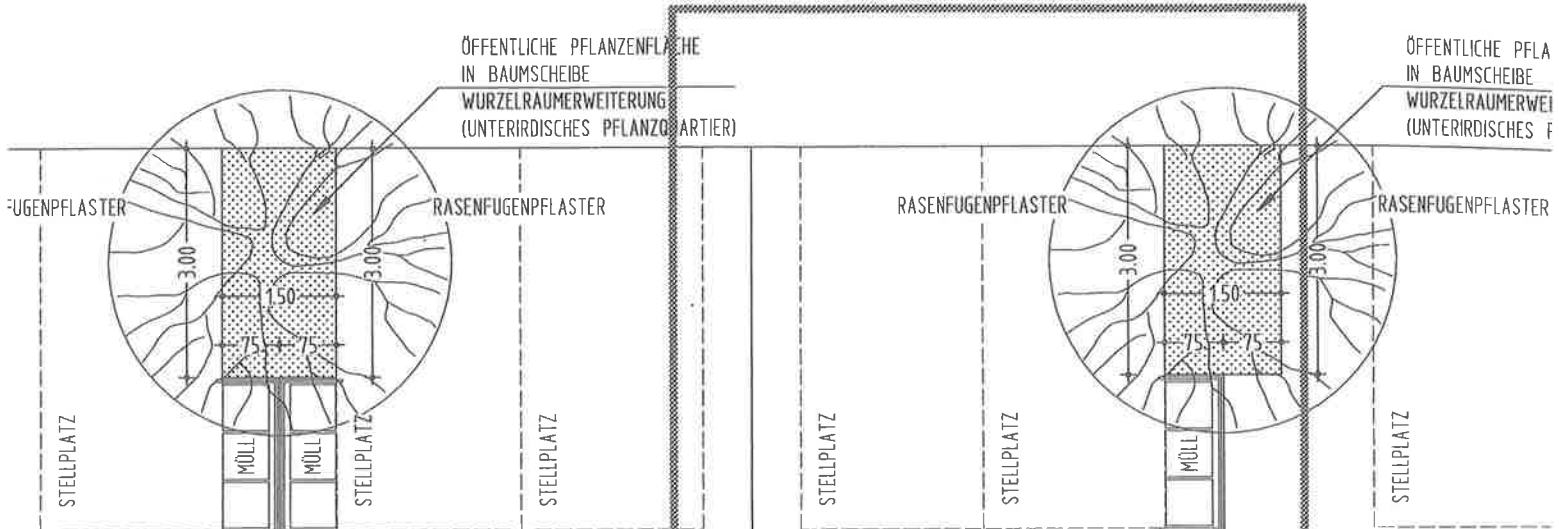
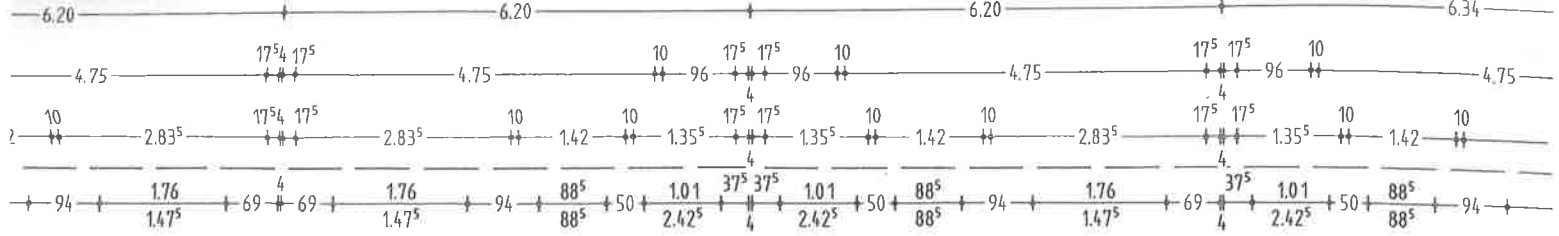


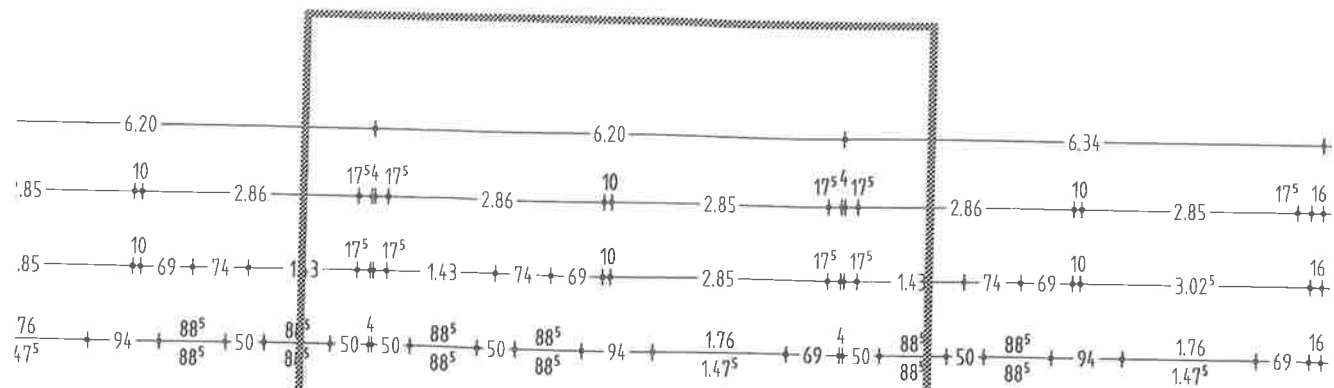
HAUS 832

HAUS 833

HAUS 834

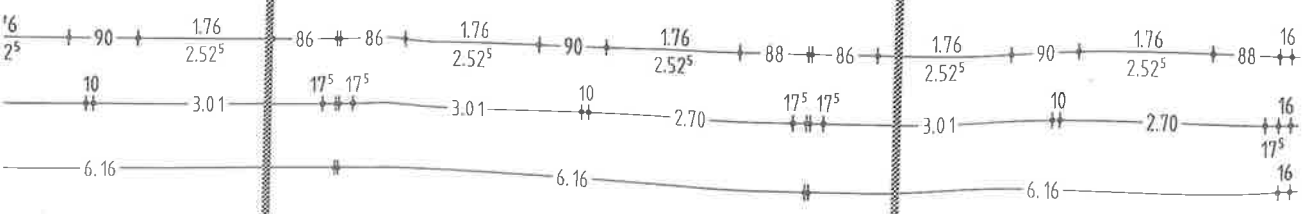
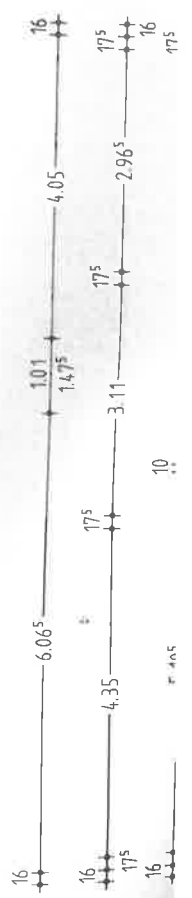
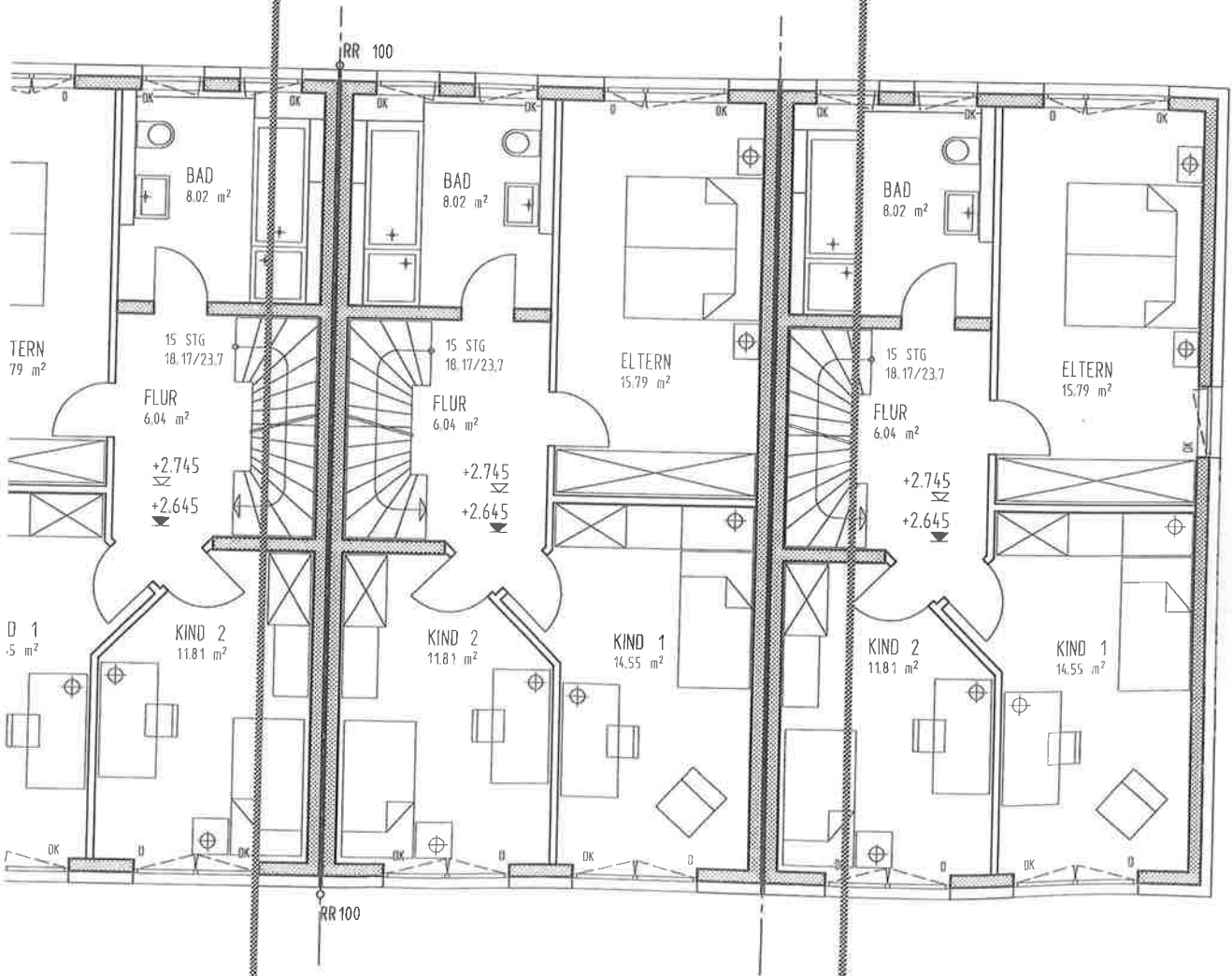


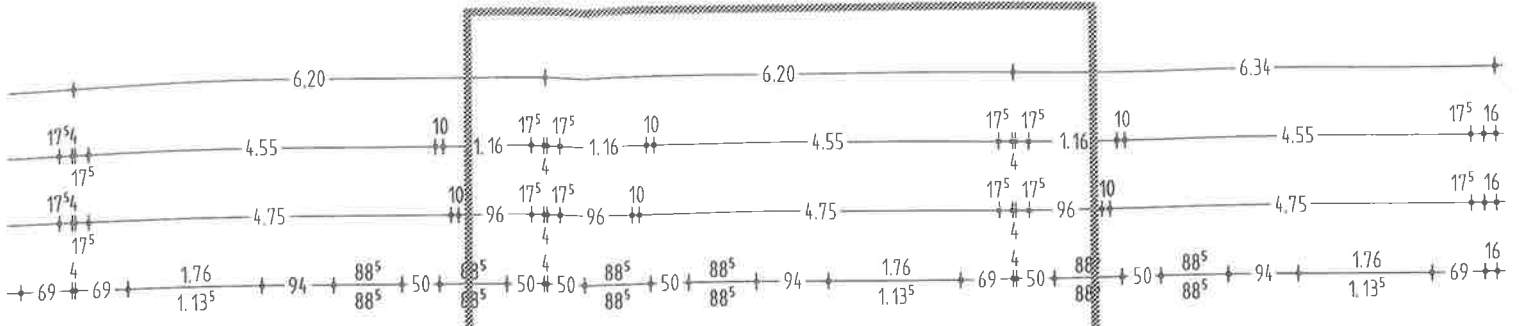




HAUS 833

HAUS 834

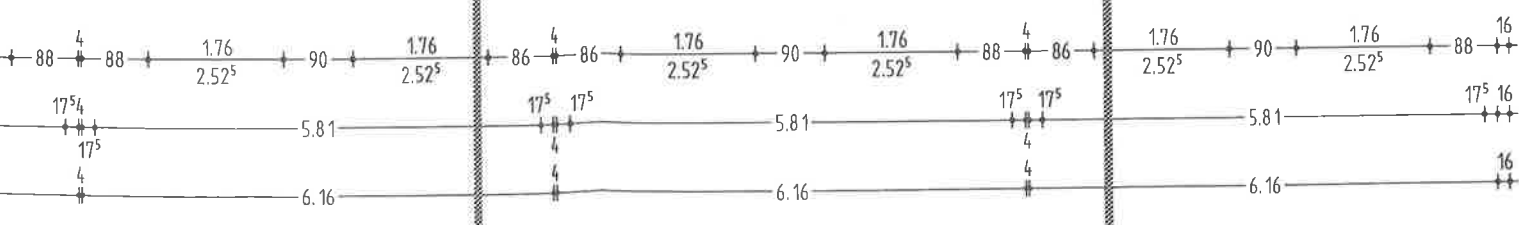
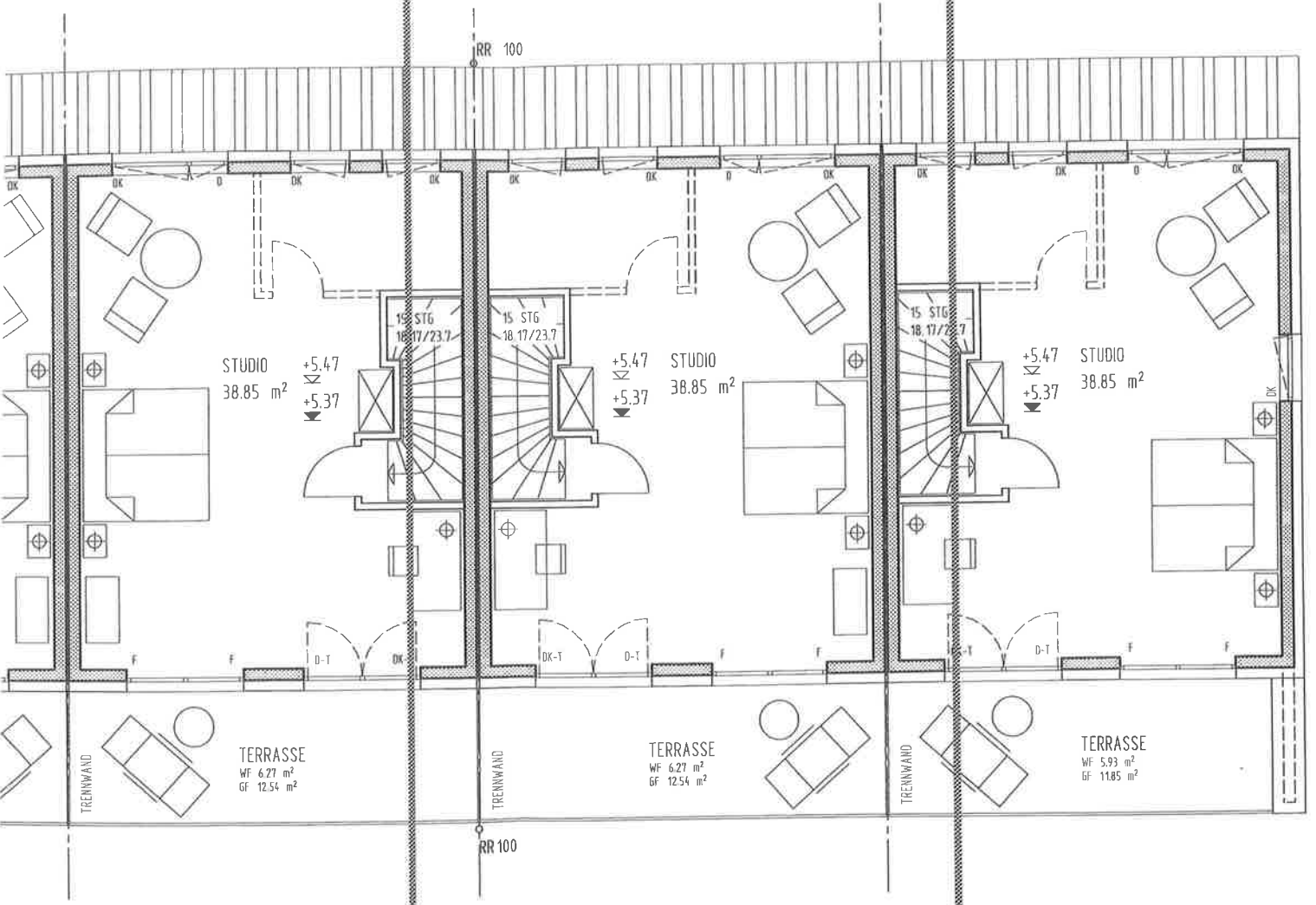




HAUS 832

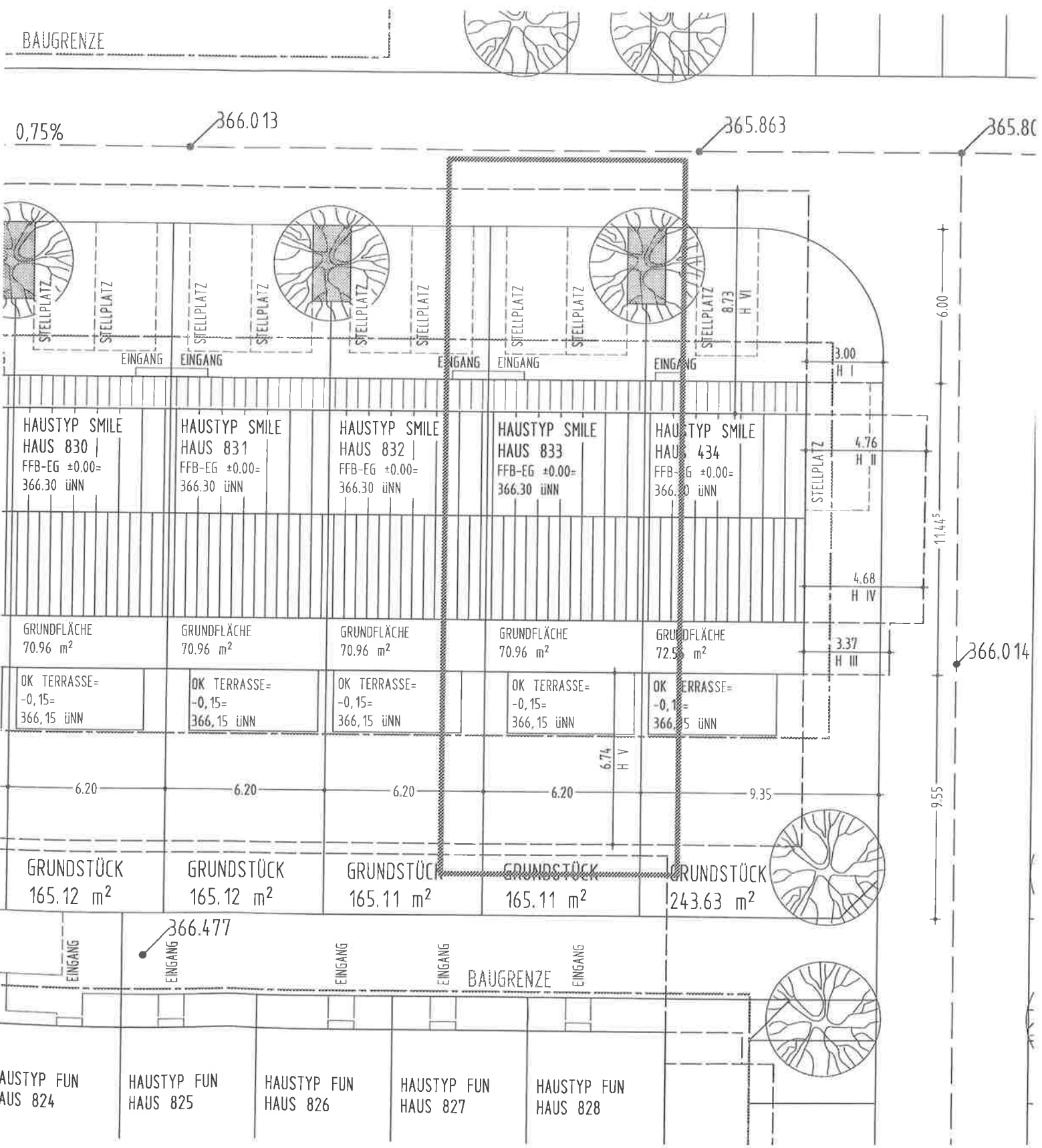
HAUS 833

HAUS 834

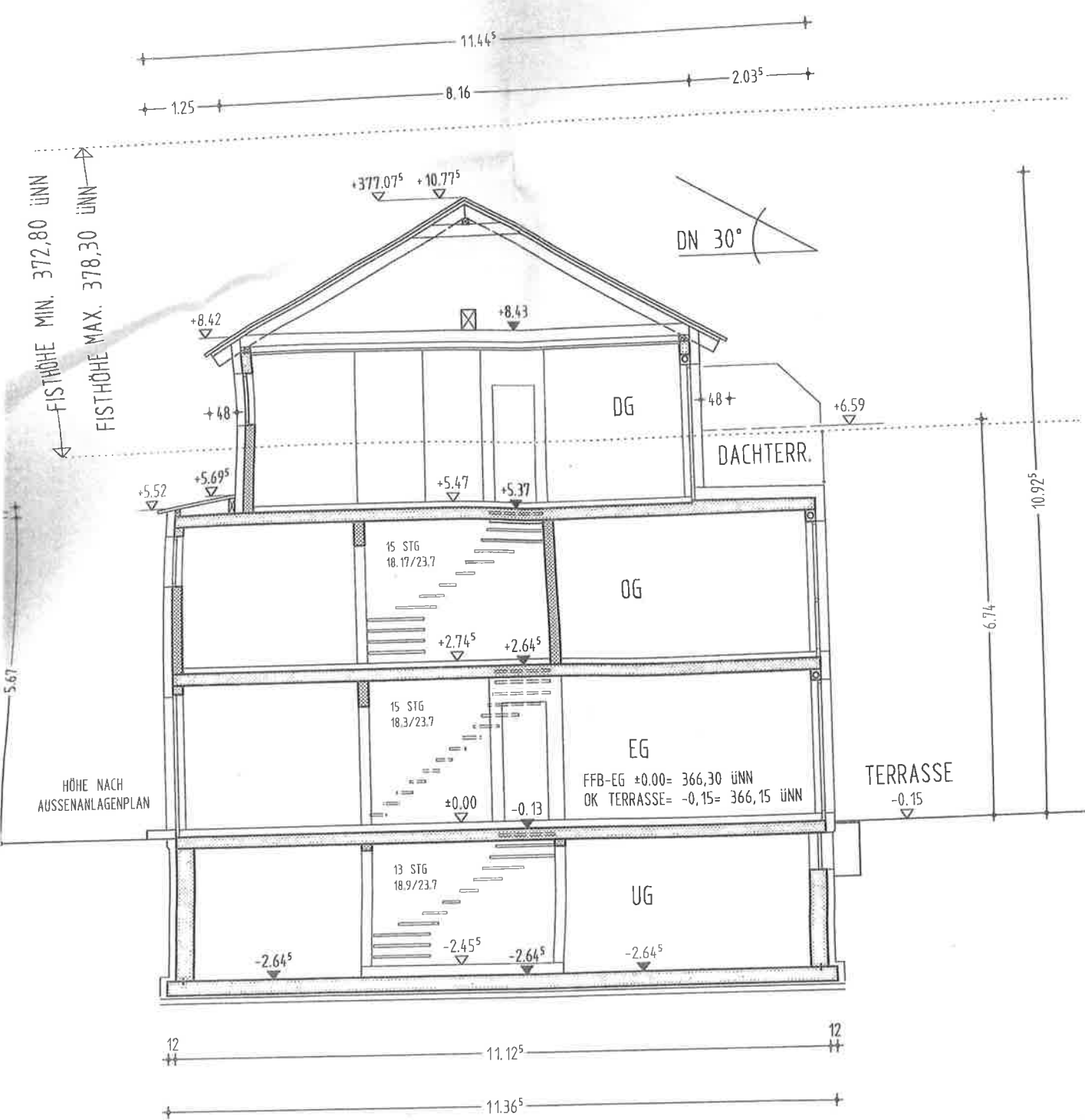


** = HZ
= B. 7.9m

HNITT 1 : 200



LÄCHEN 1 : 200



SCHNITT A - A

BERECHNUNG DER ABSTANDSFLÄCHEN

GIEBEL:
 $H I = (H_1 + 1/3 \cdot h_1) \cdot 0,5$
 $= (5,83 + 1/3 \cdot 0,175) \cdot 0,5$
 $= 2,94m > 3,00m$
 $= 3,00m$

